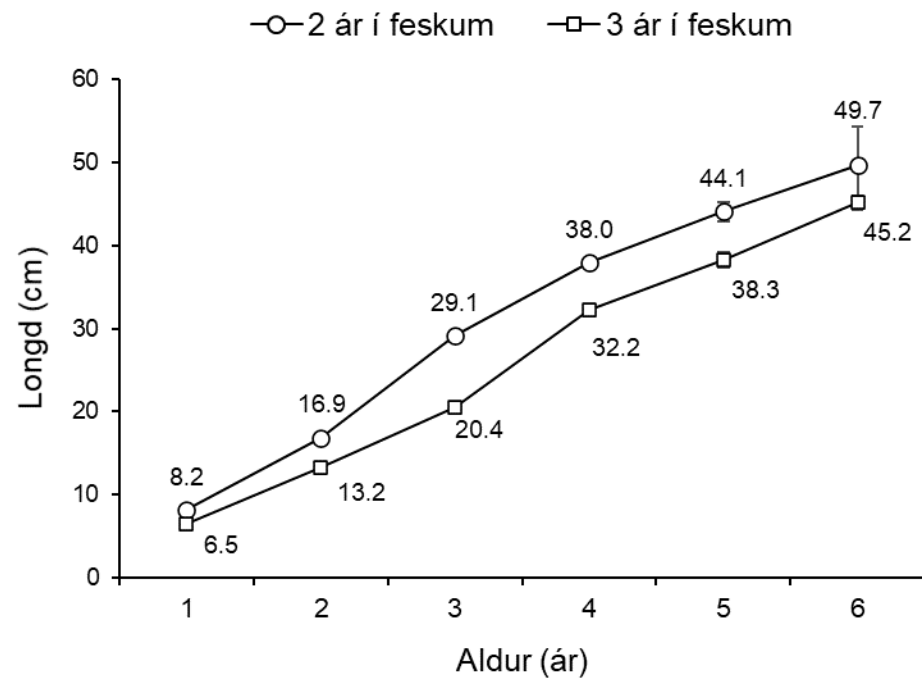
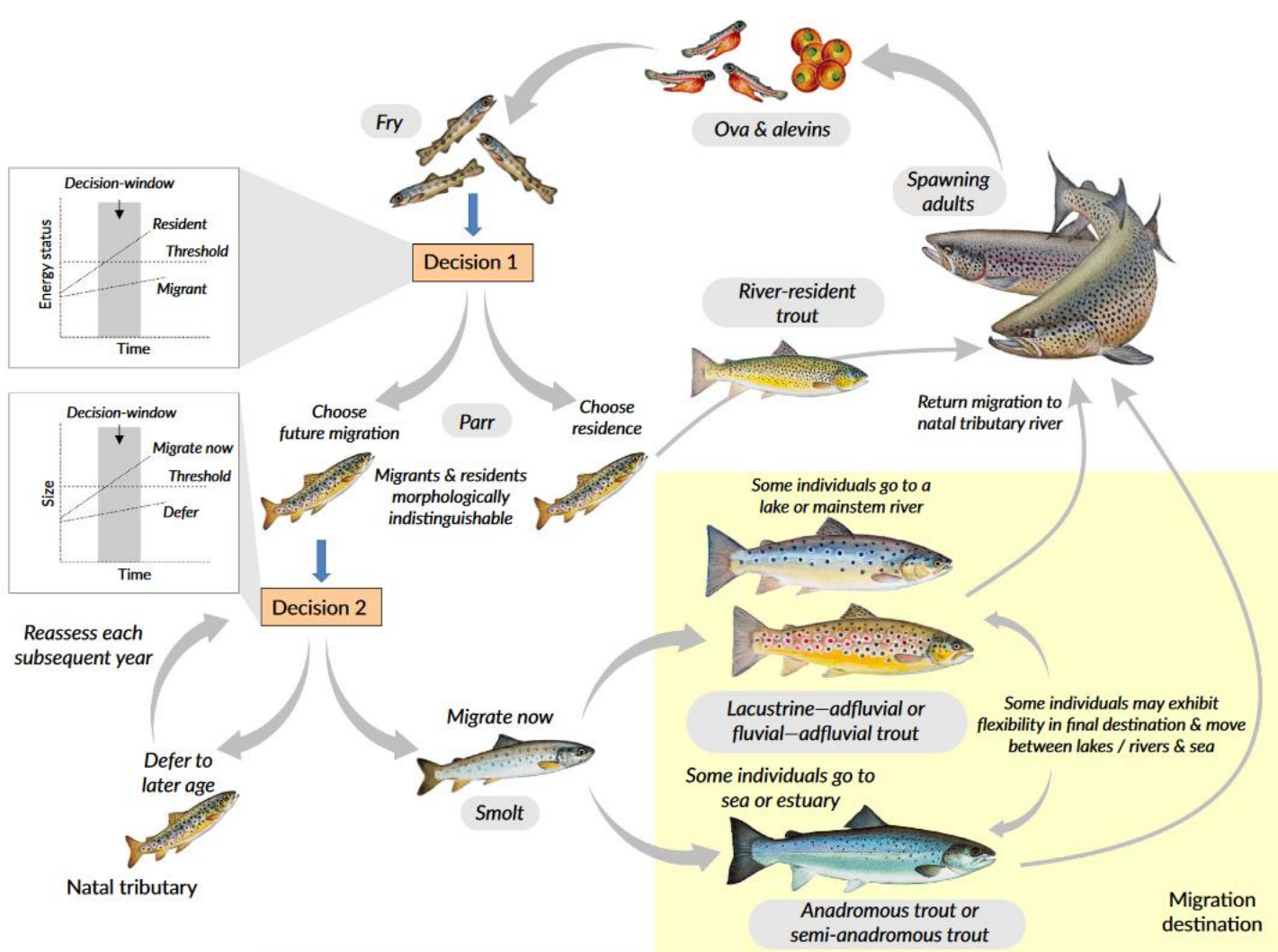


# Trivnaður hjá føroyskum sjósílum við atliti til lús

Unn V. Johannesen, Símeon Petersen, Kim S. G. Bergkvist, Andras Joensen,  
Finnur Lützen, Búgvi F. Mikladal og Kirstin Eliassen

# Lívsringrásin hjá sílum (*Salmo trutta*)





Gørn

2019: 31

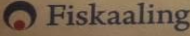
2020: 46

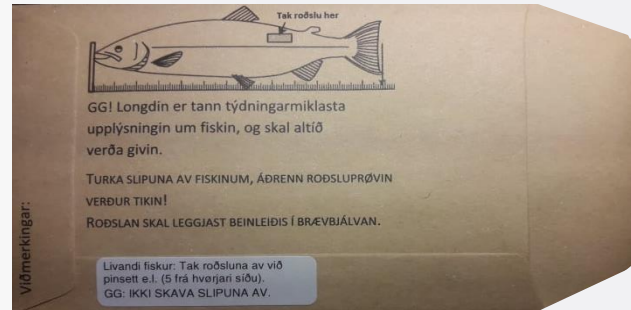
**Tils.: 77**



Navn \_\_\_\_\_ Tlf \_\_\_\_\_  
Stað \_\_\_\_\_ Dato \_\_\_\_\_  
Slag: S  L  Æ  K  Ó   
Longd \_\_\_\_\_ cm Roðsla Ja  Nei   
Vekt \_\_\_\_\_ g H  K  Lús Ja  Nei  Tal \_\_\_\_\_  
Fitifjöldur manglar Ja  Nei  Kyn Kall  Kvenn   
Fiskurin merktur Ja  Nei  Kynsbúgvín Ja  Nei   
Settur út aftur Ja  Nei  Mynd Ja  Nei   
Vegleiðing til sýnistøku er at finna á Fiskaaling.fo

P/F Fiskaaling  
Við Áir 11  
430 Hvalvík

 Fiskaaling



Brævbjálvar

2019: 147

2020: 166

**Tils.: 313**

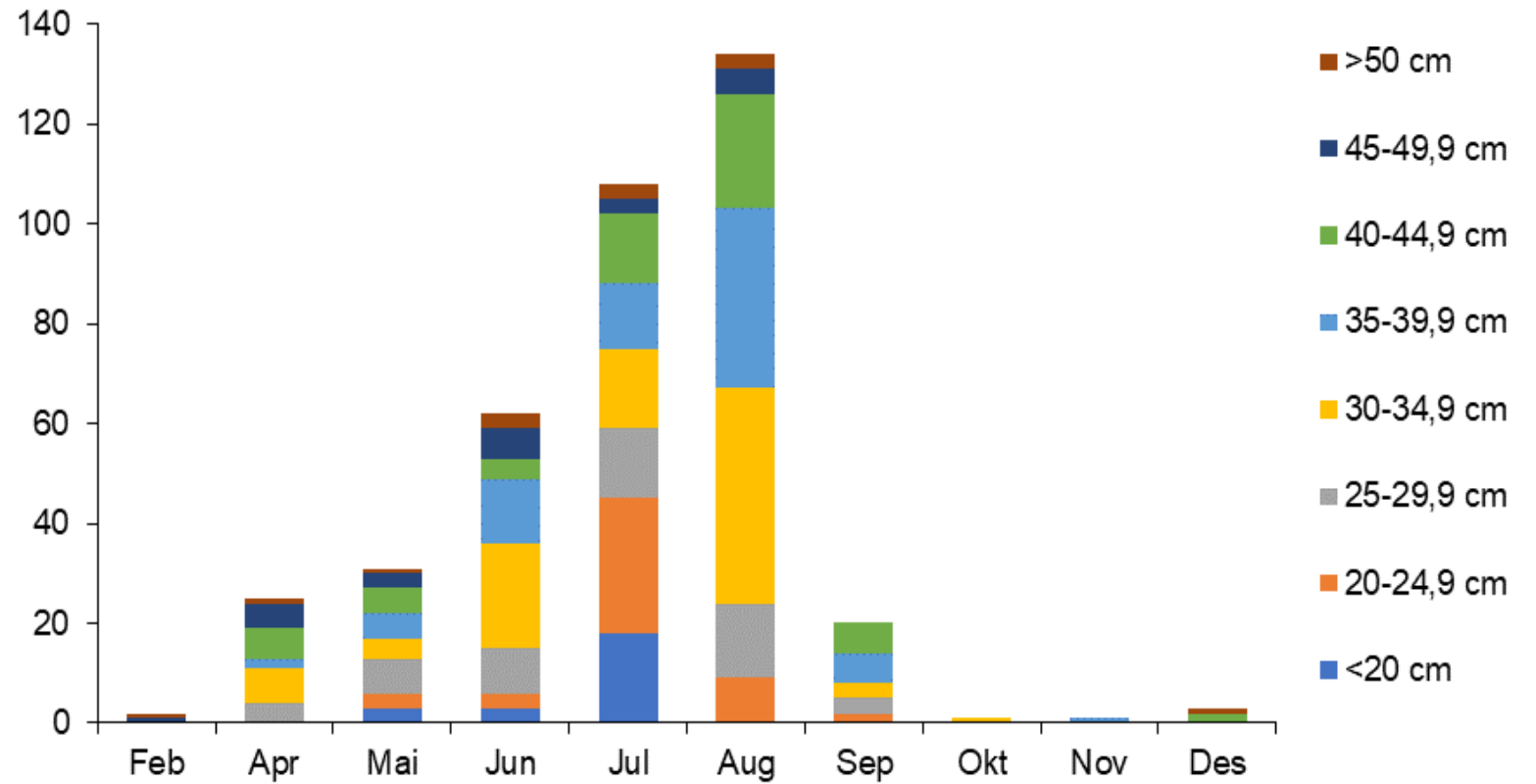


Data tilsamans

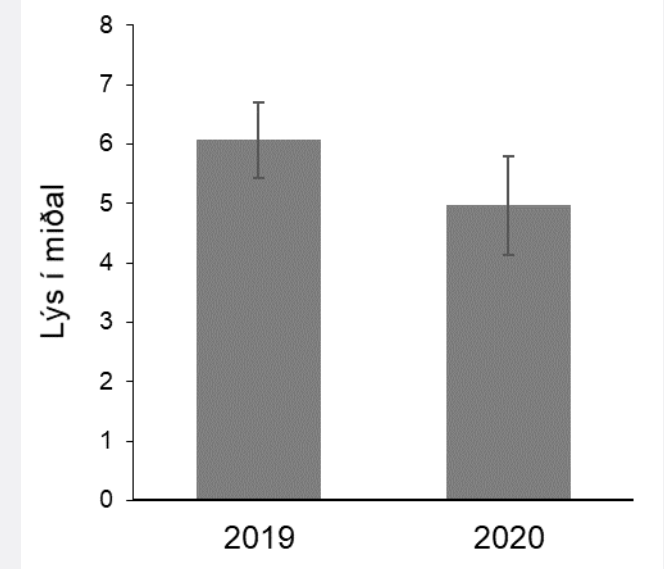
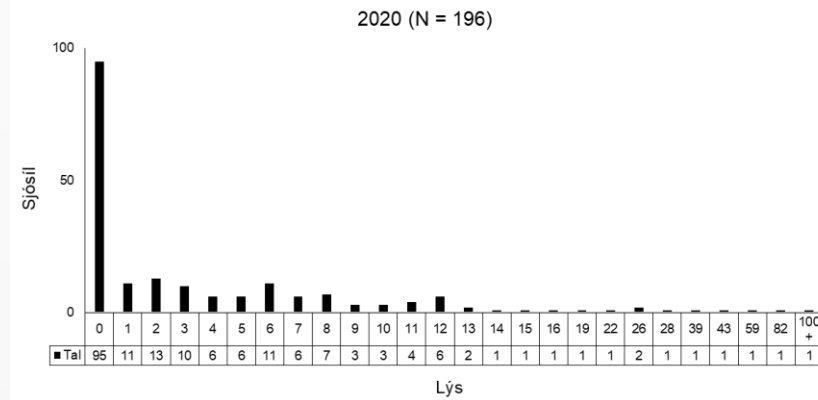
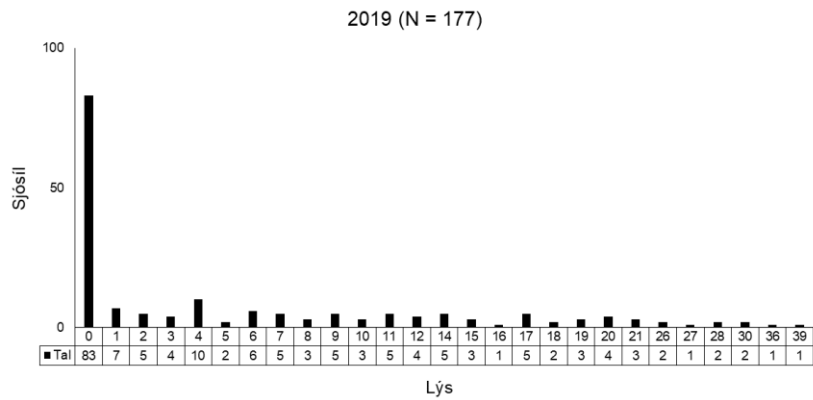
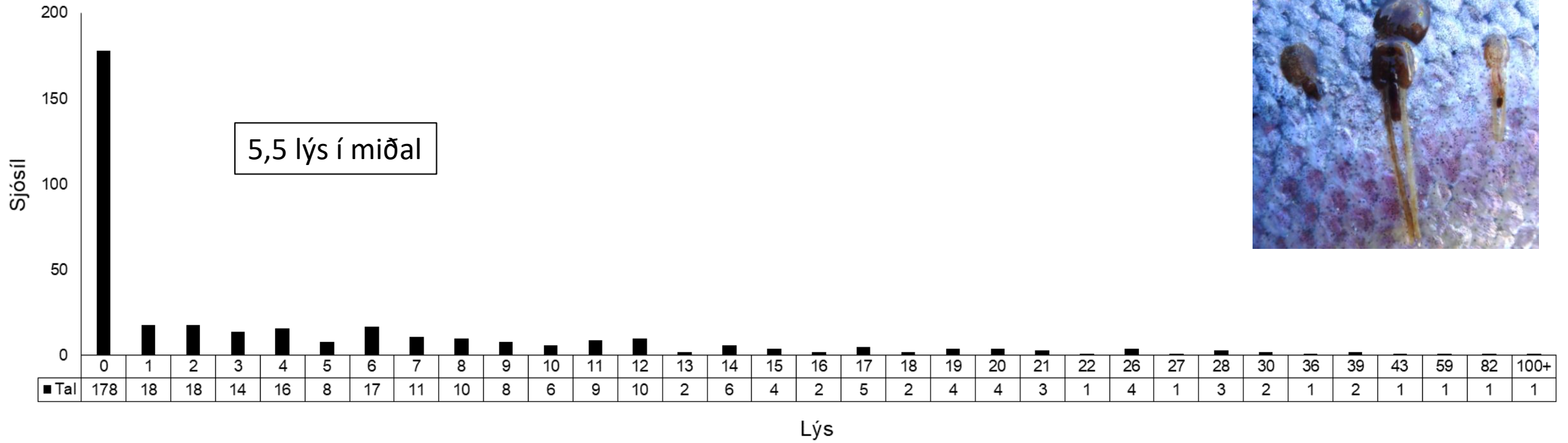
2019: 178 sjósíl

2020: 212 sjósíl

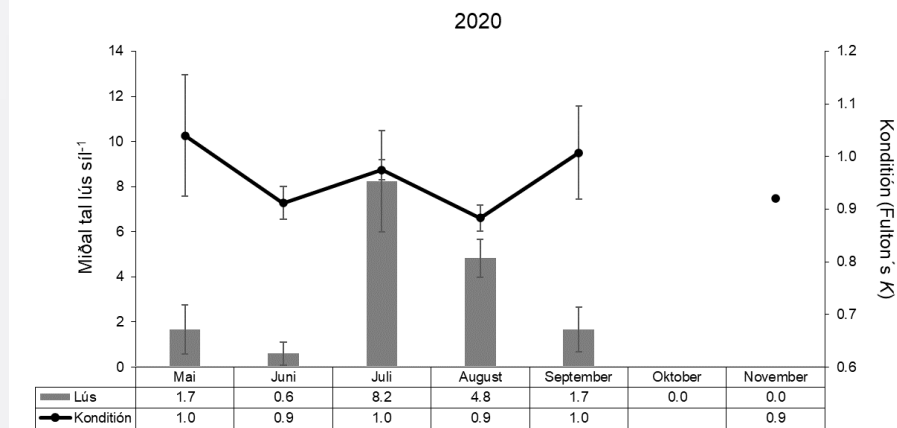
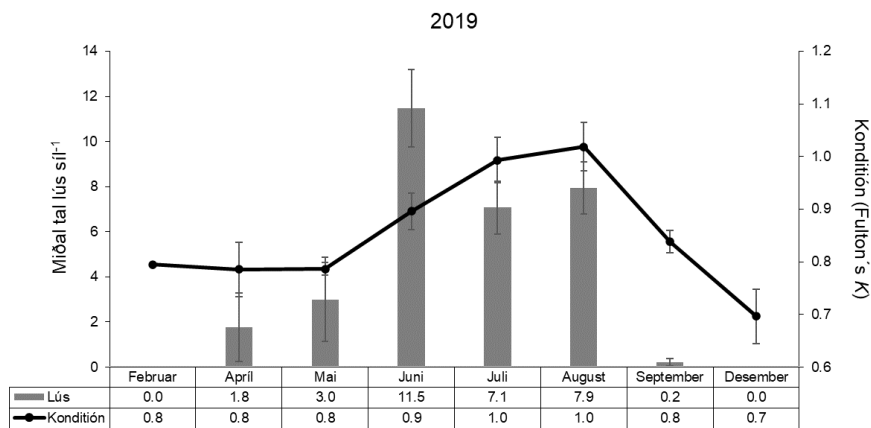
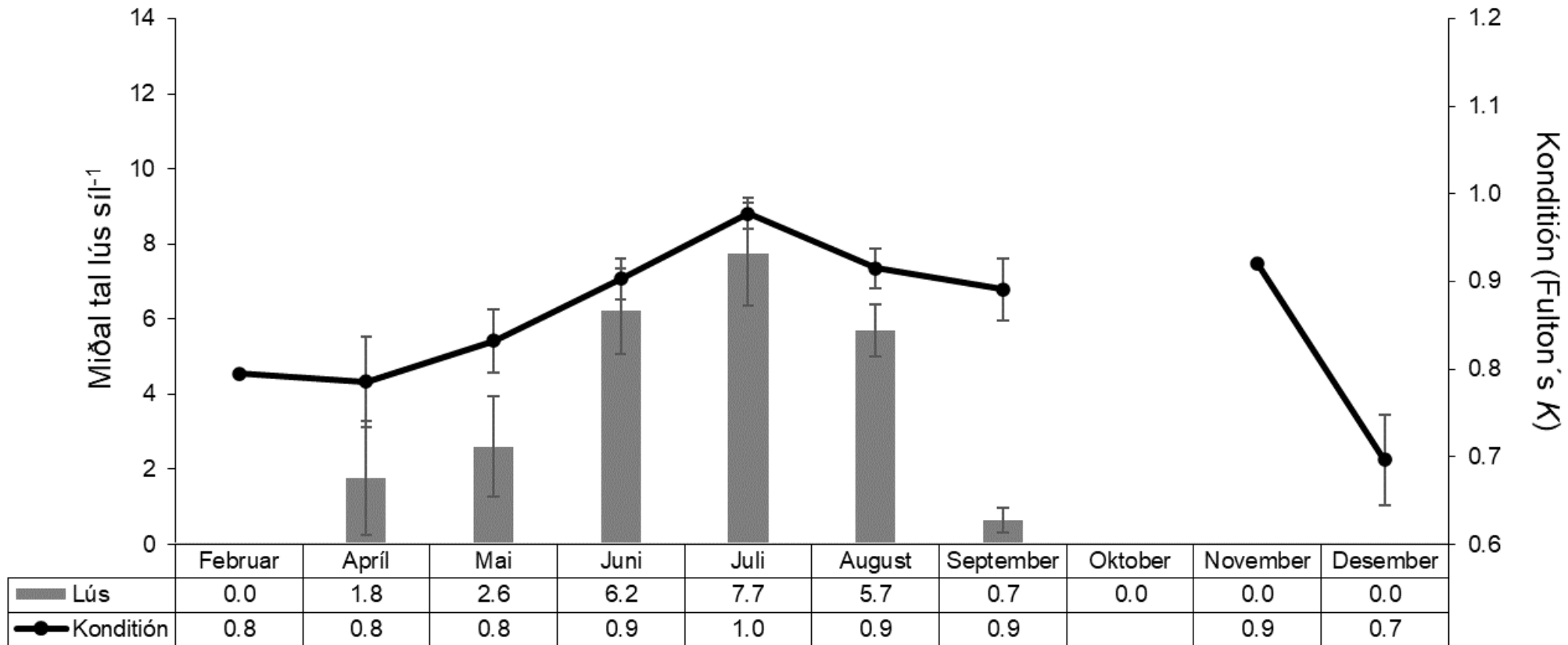
**Tils.: 390 sjósíl**



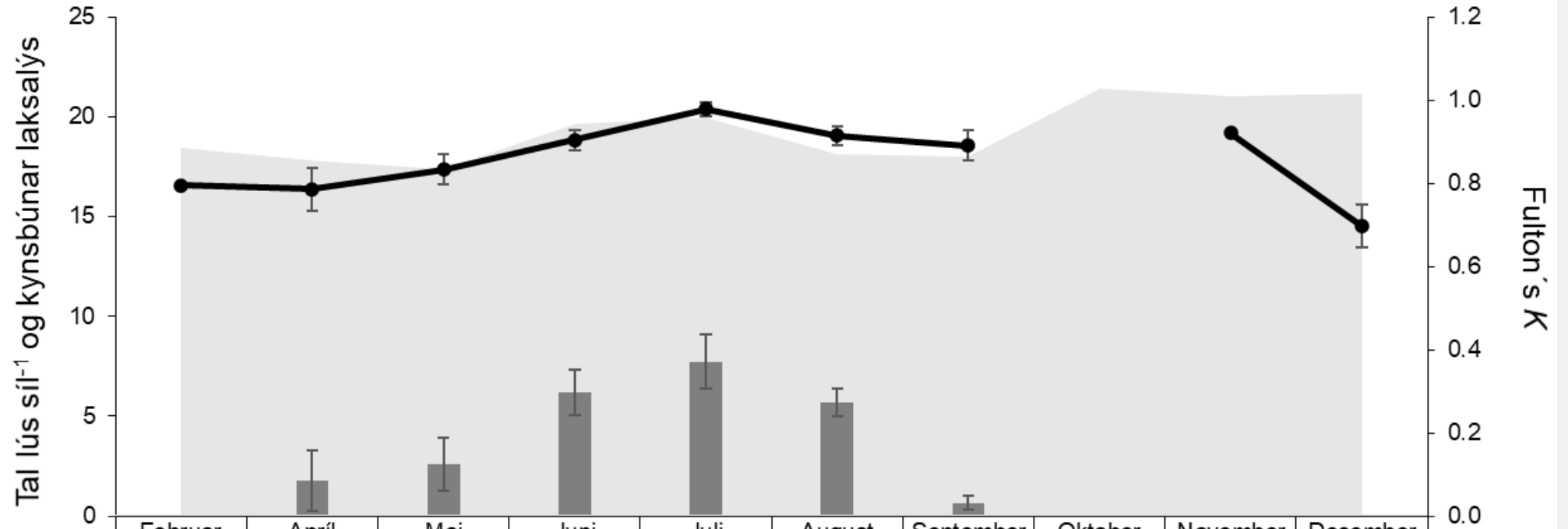
# Lýs á sjósílum (N = 373)



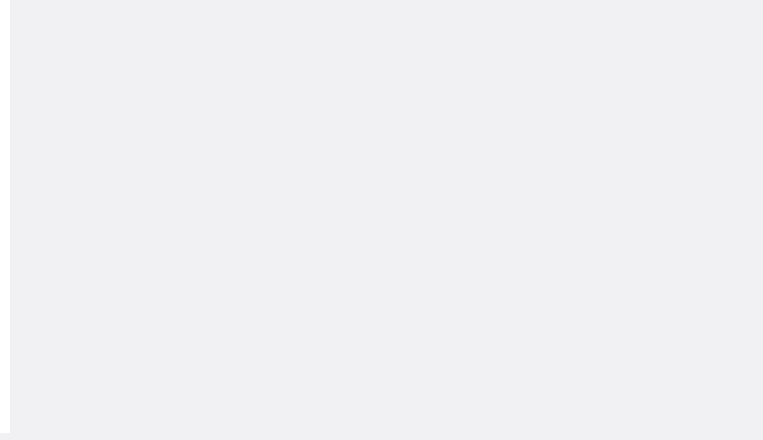
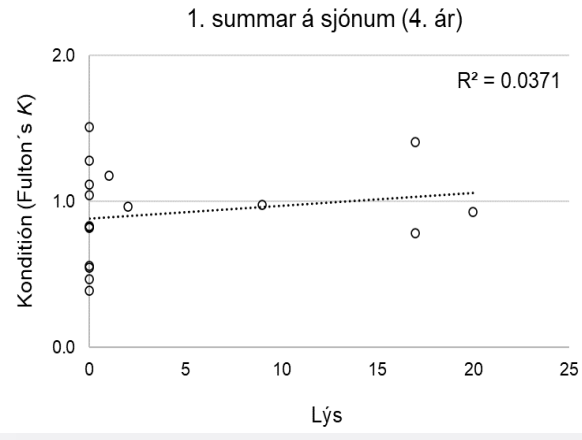
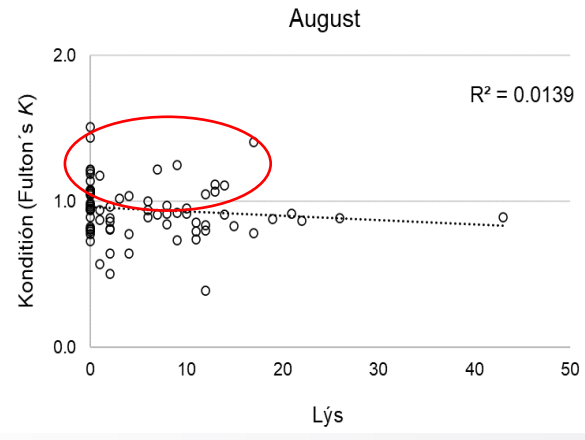
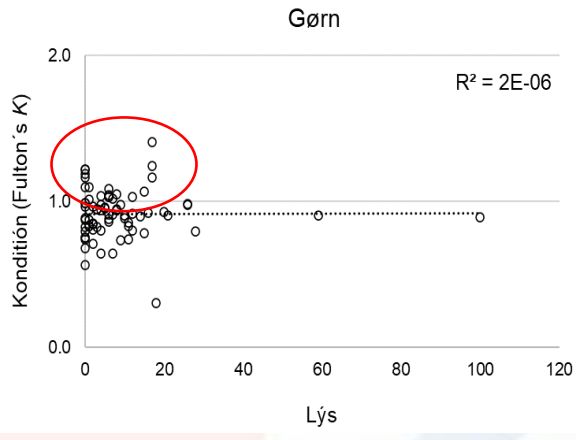
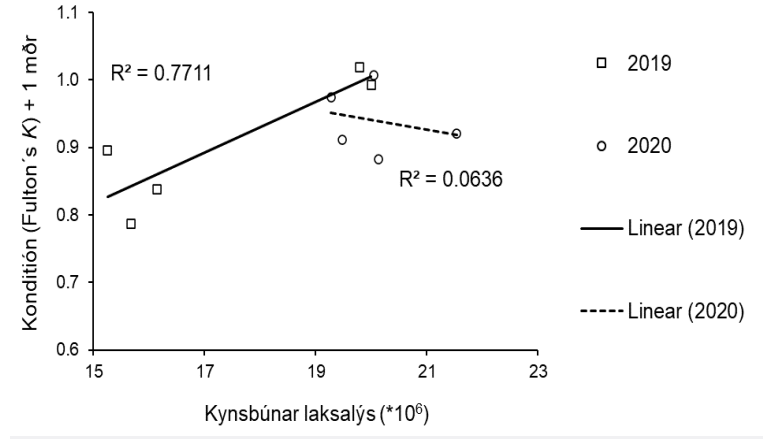
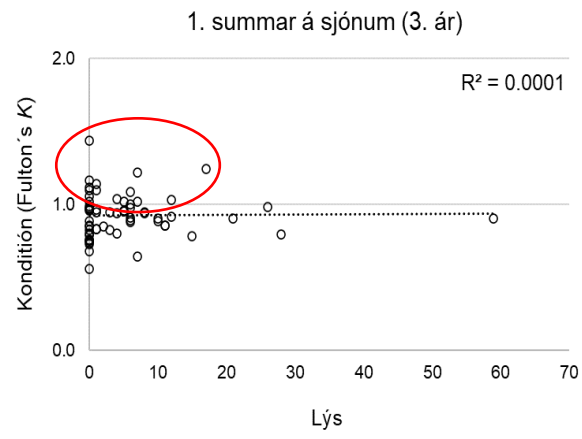
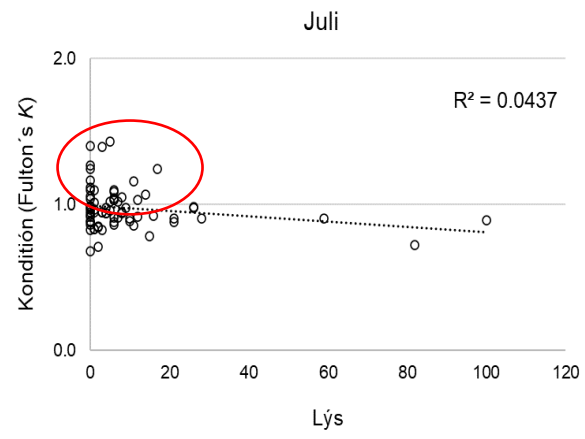
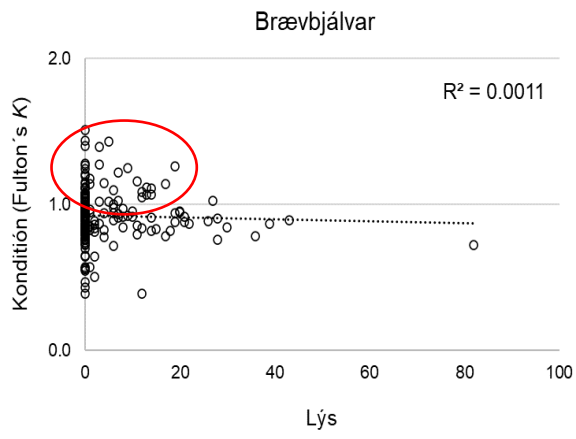
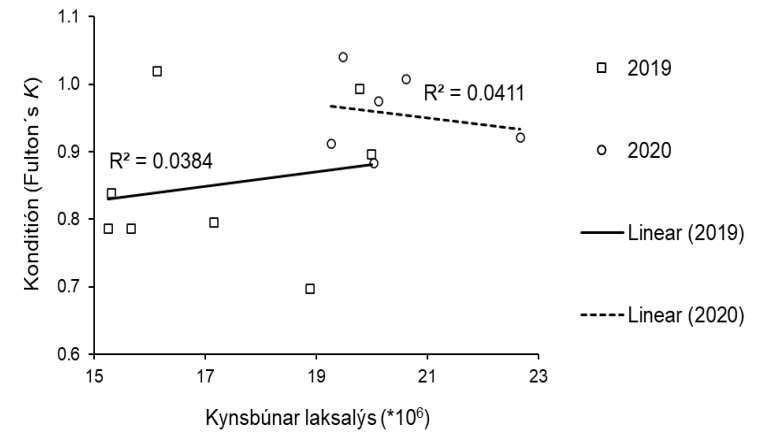
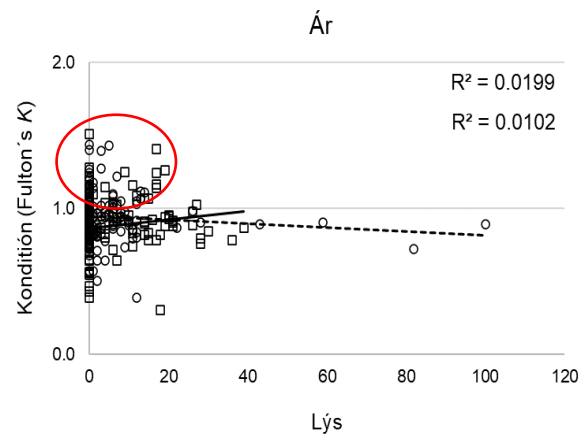
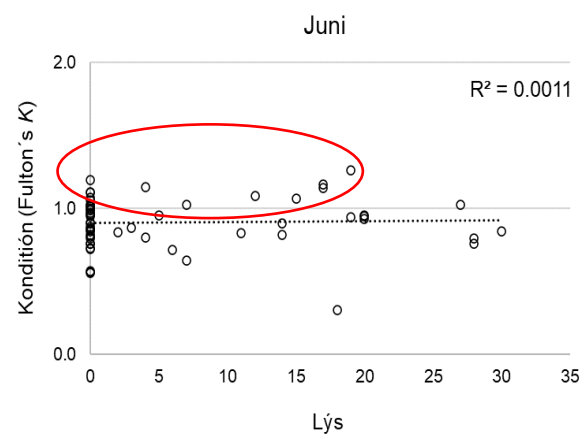
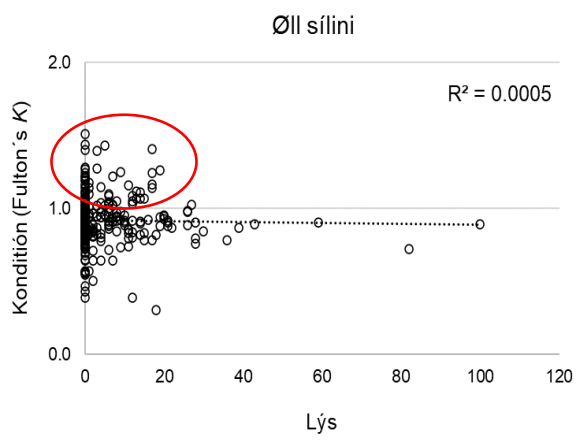
# Lús og konditión



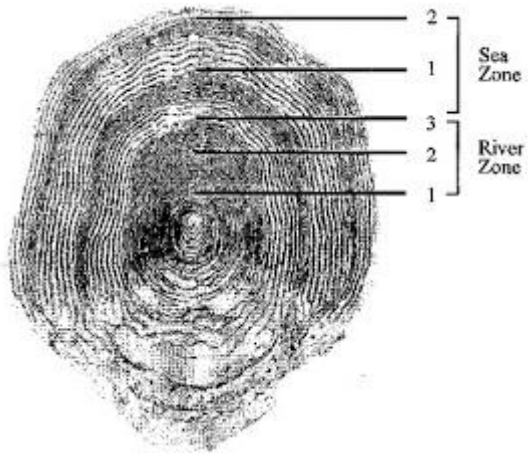
## Lús og kondítión



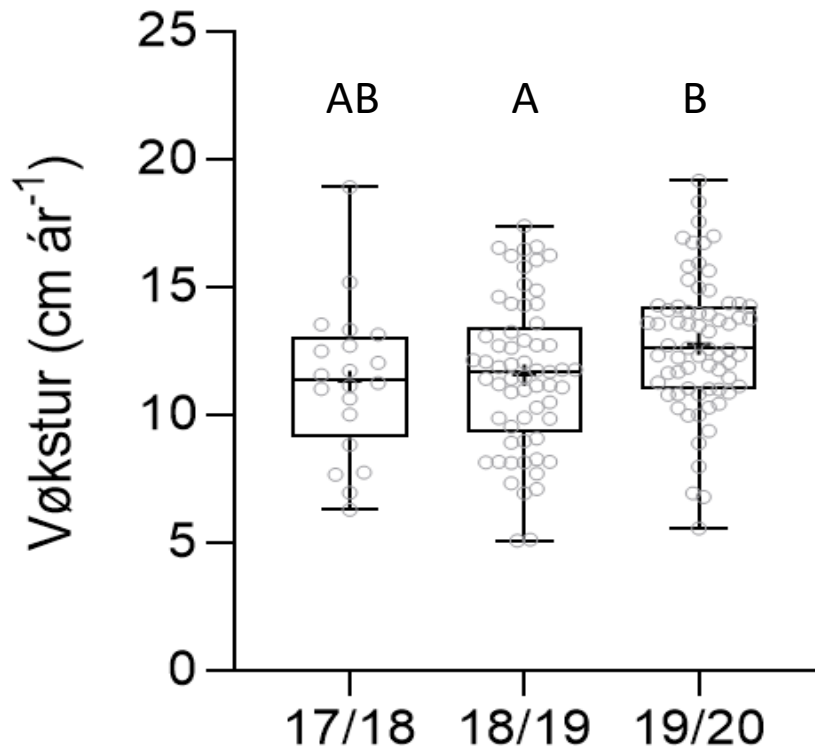
	Februar	Apríl	Mai	Juni	Juli	August	September	Oktober	November	Desember
■ Kynsbúnaðarsalálýs	18.4	17.8	17.4	19.6	20.0	18.1	18.0	21.4	21.0	21.1
■ Lús	0.0	1.8	2.6	6.2	7.7	5.7	0.7	0.0	0.0	0.0
● Kondítión	0.8	0.8	0.8	0.9	1.0	0.9	0.9		0.9	0.7



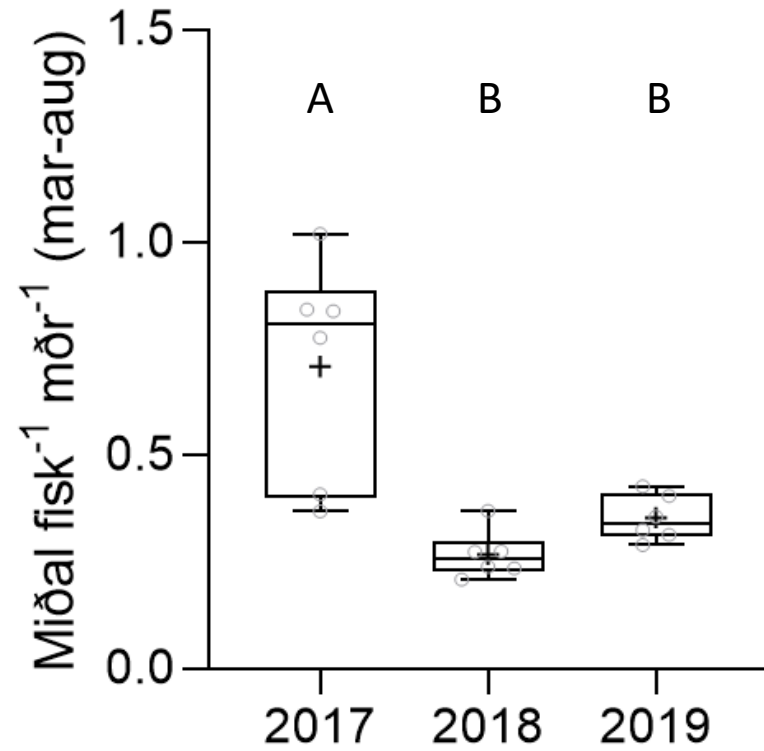


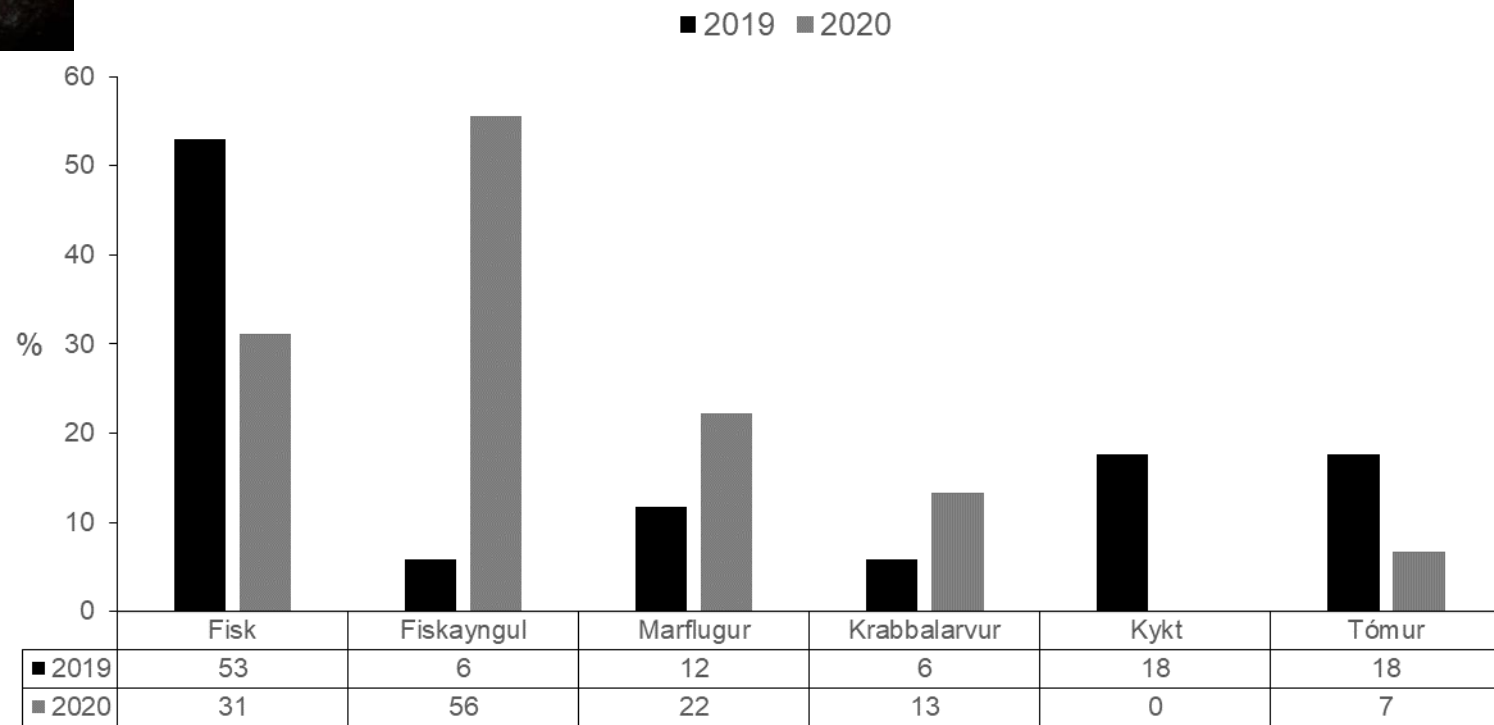


### Vækstur 1. árið (3 ár)



### Kynsbúnaar laksalýs





## Niðurstøður

1. Gott helmingurin av kannaðu/fráboðaðu sjósílanum høvdu lýs
2. Ábendingar um at sjósíl fara í feskvatn at avlúsa seg – kann ávirka vøkstur
3. Ikki møguligt at finna nakað samband millum konditióin/vøkstur hjá sjósílum og lúsastøðu
4. Sannlíkt at sambandið kann órógvast av munum í føði millum ár
5. Verður vónandi greiðari so hvørt sum ár leggjast afturat tíðarseriuni



Takk fyri